



LED Double Ring Flush Mount Ceiling Light With Motion Sensor



Application: Ideal for residential spaces, offices, hallways, utility rooms, and commercial areas such as hotel rooms

CERTIFICATIONS



FEATURES

This modern, energy-efficient lighting solution is designed to enhance both functionality and aesthetics in commercial and residential spaces.

- Motion Sensor: For added convenience and efficiency
- Diffusers: High-light transmittance polycarbonate
- Dimming: Triac dimming, compatible with 95% of Lutron and Leviton dimmers
- Performance: High luminous efficiency with excellent color rendering

PRODUCT SPECIFICATIONS

Model No	HY-DR12-16W-CCT-MS
Wattage	16W
Size	12"
Lumens	1280 LM
Rated Input Voltage(V)	AC 120V
CCT	CCT Selectable: 2700K/3000K/3500K/4000K/5000K
Body	Stainless Steel
Beam Angle (°)	120°
Dimming	YES
Color Rendering Index	>80
Power Factor	>0.90
Working Temperature	13 ° F ~+130 °F / -25°C-45°C
Environment Location	IP 20 - Indoor Only
Lifespan	Lumen Maintenance over 70% @ 50,000+ Hours
Body Finish	Brushed Nickel
Package Dimensions	18.5"X13.0"X13.2"
PC/ Master Pack	6
Package Weight	5.99 kg/13.2 lbs

MOTION SENSOR DEFAULTING SETTING

Detection Sensitivity	8dBm
Detection Area	Within 20-26FT
Hold Time	20S
Daylight Sensor	The sensor can be configured to activate the lamp only when the ambient brightness falls below a specified threshold (15-20 lux).

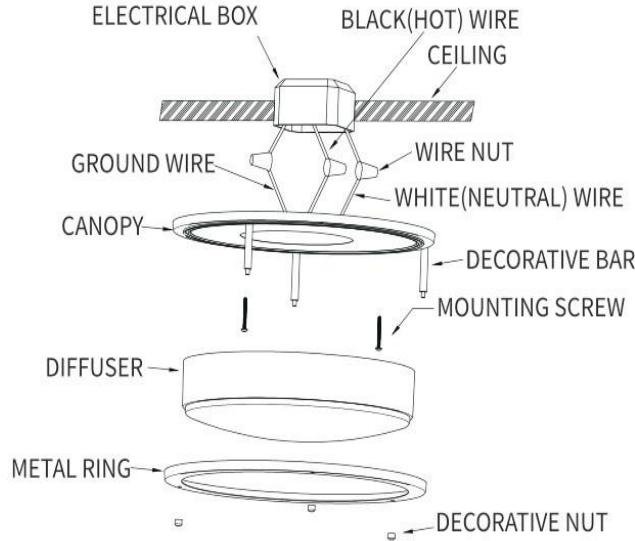
ORDERING CODE DEFINITION

HY -DR12-16WCCT-MS					
Company Code	Product	Size	Power	CCT	MS
HY	DR: Double Ring Flush Mount Ceiling Light	12"	16W	5 CCT Selectable: 2700K/3500K/4000K/5000K/6500K	Motion Sensor



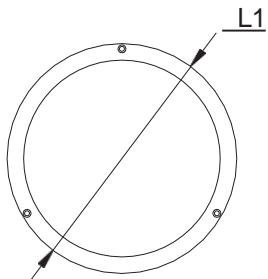
LED Double Ring Flush Mount Ceiling Light With Motion Sensor

STURCTURE

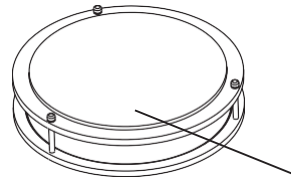
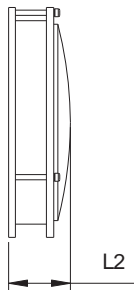


PRODUCT DIMENSIONS

Front View



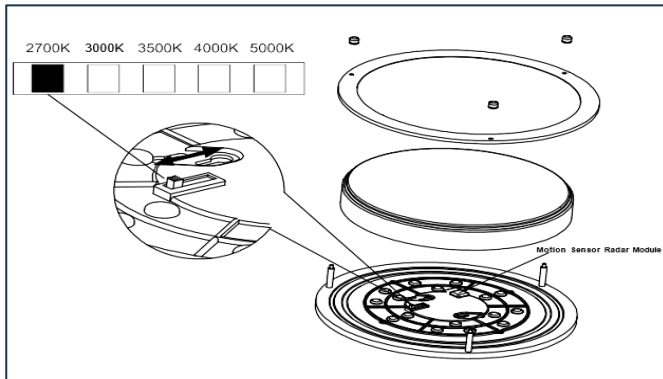
Side View



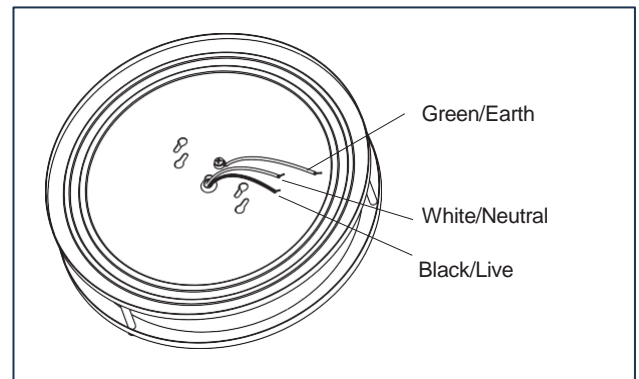
Size	Model No.	HY-DR12-16WCCT-MS
L1		Φ305mm/Φ12"
L2		65mm/2.56"

OPERATING GUIDE

1 CCT Adjustable



2 Wiring Guide





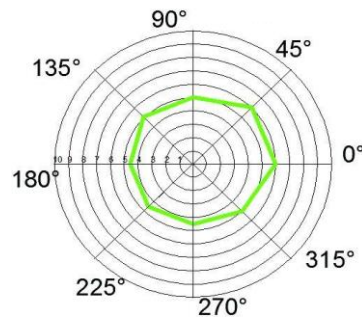
LED Double Ring Flush Mount Ceiling Light With Motion Sensor

Module Technical Specifications

SPEC	Minimum value	Typical value	Maximum value	Remark
Operating frequency range	5.725 GHz	5.8GHz	5.875 GHz	
Operating voltage	DC+5V	DC+8V	DC12V	
Working current	17 mA	21 mA	25 mA	
Sensing distance	See test diagram below			Can be reduced overall
Delay time	1S	2S	3S	Modifiable
Luminous value	5Lux	10Lux	15Lux	Modifiable
Operating temperature	-22°F	-	+185°F	
Storage temperature	-40°F	-	+302°F.	
Ambient humidity	5%	-	90 %	
Antistatic voltage	-1KV (HBM)	-	+1KV (HBM)	

SENSITIVITY RANGE DIAGRAM

The module is installed at a height of approximately 9.8 feet(3M), and individuals walk directly beneath it at a speed of 1.6 feet per second.



SENSOR COVERAGE

