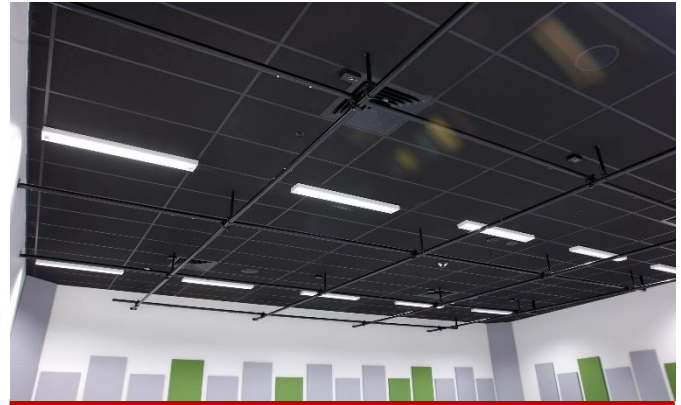




Project Name: _____
 Date: _____ Note: _____

LED Wraparound - LW102 Series



Application: Commercial; Industrial; Warehouse; Retails; Residential garage; school/institution; supermarket....



FEATURE

- Acrylic lens available in 4 FT and 8FT length
- High energy efficiency: 32W replace 2x32W T8
- Suitable for damp location
- Steel housing
- Equipped with heat resistant prismatic lens
- 0-10V Dimmable
- Chain or surface mount installation
- Option: available with emergency backup kit/ motion sensor

Specifications		
Model No.	HY-4FT-LW102-40W-3CCT	HY-8FT-LW102-80W-3CCT
Power:	40W	80W
Input Voltage:	AC110-277V	
Luminous Flux:	5,200	10,400
Efficacy:	130 lm/W	
Power Factor:	>0.9	
THD:	<10%	
CCT:	3000K-4000K-5000K Adjustable	
CRI:	>80	
Working Life:	>50,000 hours	
Working Temperature:	-10°F to 105°F	
DLC Listing	S-4FIDSR	S-YNM289
Product Size:	46.85"x6.89"x2.76"	93.70"x6.89"x2.76"
Qty/Master Pack	5	3
Master Pack Size:	48.7"x13.6"x25.5"	94.9"x11.0"x9.3"
Master Pack Weight	38.58 lbs	46.74 lbs

OPTION

- Emergency Driver
- Motion Sensor

ORDERING CODE DEFINITION

EXAMPLE: HY-4FT-LW102-40W-3CCT

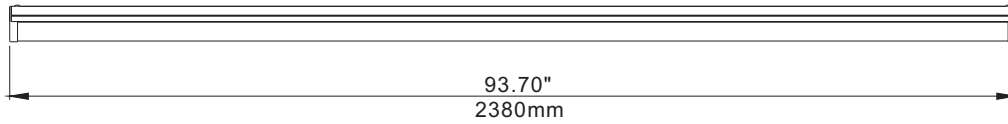
Company Code	Length	Product	Wattage	CCT
HYA	4FT	LW102: LED Wraparound	40W: 4FT 40W	CCT: 3000K-4000K-5000K
	8FT		80W: 8FT 80W	



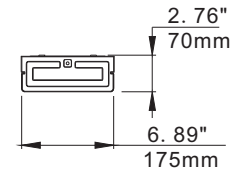
LED Wraparound - LW102 Series

DIMENSION

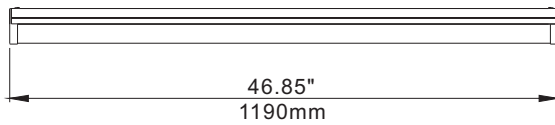
8ft Front View



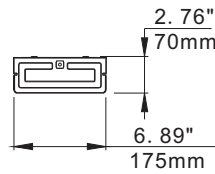
Side View



4ft Front View

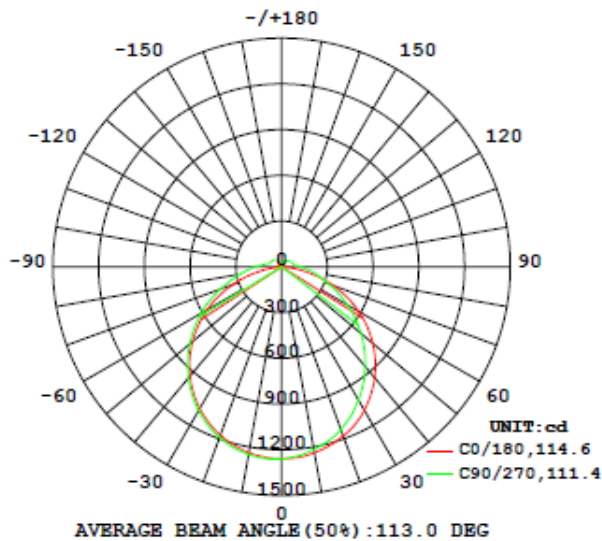


Side View

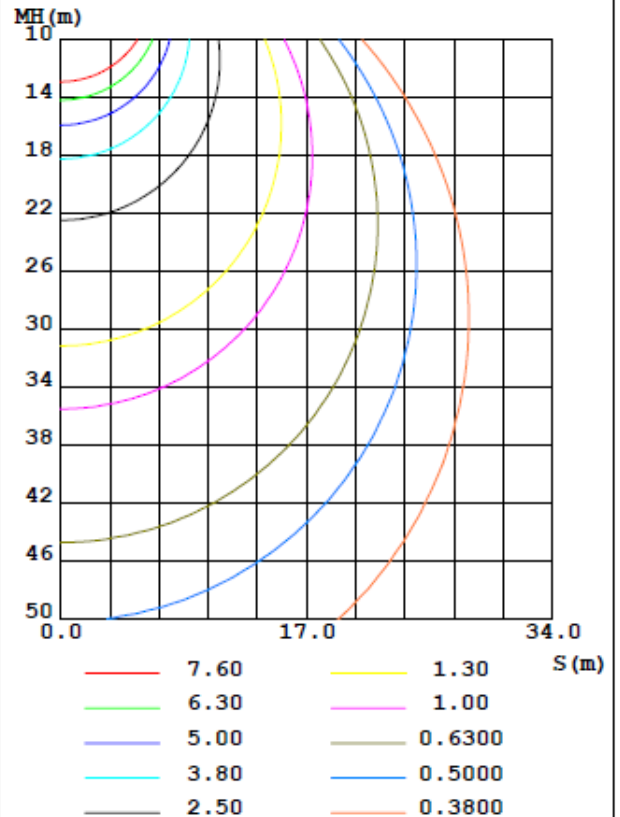


PHOTOMETRIC REPORT

LUMINOUS INTENSITY DISTRIBUTION DIAGRAM



C0 PLANE ISOLUX DIAGRAM (UNIT:lx)





LED Wraparound - LW102 Series

INSTALLATION

